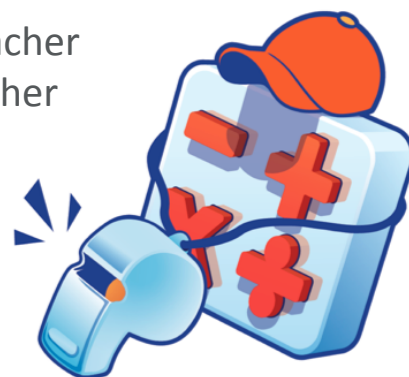


Ensuring Success with the Personal Math Trainer™

Tips for Students and Family Members

The Personal Math Trainer is an online tool your teacher will use as part of the *GO Math!* program. Your teacher may ask you to take a test or do your homework in the Personal Math Trainer. Assignments from your teacher will show up in your *To Do* list when you login to ThinkCentral.



1 Getting Started

Ask your parents to help you check the settings on your computer if you are having problems seeing the assignments.

- A list of supported browser and operating system combinations can be found [here](http://customer care.hmhco.com/product/techsupport/CCTechSupportSearchResults.html?isid=52231): <http://customer care.hmhco.com/product/techsupport/CCTechSupportSearchResults.html?isid=52231>
- Make sure your browser preferences are set to allow pop-ups from ThinkCentral.
- We recommend that you update your browser and operating system to the latest version for the best experience.

2 Login to ThinkCentral

Login to [ThinkCentral](http://www-k6.thinkcentral.com) with the user name and password that your teacher gave you.

<https://www-k6.thinkcentral.com>



3 Launch a Personal Math Trainer Assignment

From the main login screen, click on *Things to Do*.



Look at the list of assignments and take note of the due date.



Click on the name of the assignment you want to open.

Assignment	Teacher	Subject	Due Date
Lesson 4.2 Homework	Lesh	Mathematics	Oct. 16, 2014
Interactive Student Edition Lesson 4.3	Lesh	Mathematics	Oct. 18, 2014

If your teacher assigns you an Interactive Student Edition lesson, you will find Personal Math Trainer assignments on the last two screens.

4 Work on the Assignment

Work through the questions in your assignment.

Questions may be answered in a variety of formats—entering an answer in an answer box, choosing from a set of multiple-choice answers, choosing a response from a drop-down box, or using a number line or graphing tool that appears on the screen. Some questions have multiple parts. Make sure you answer all the parts of every question.

Stay focused on your assignment.

You will have better results with PMT if you have a designated time to work on your assignment. Stay focused and avoid multi-tasking.

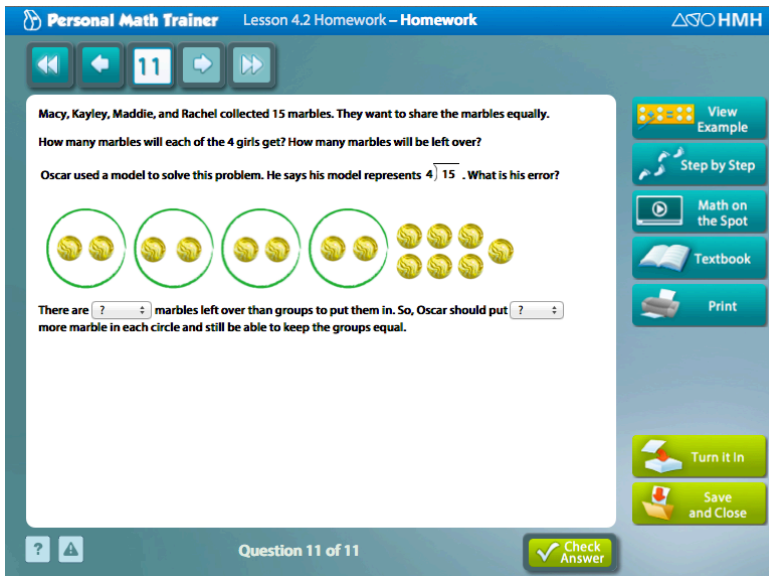
Be sure to save your work frequently.

If you need to take a break or walk away from your device, be sure to click the *Save and Close* button first.



5 Use the Learning Aids

When your teacher gives you a Homework assignment, there are Learning Aids to help you answer questions.



The screenshot shows the 'Personal Math Trainer' interface for 'Lesson 4.2 Homework - Homework'. The main content area displays a math problem: 'Macy, Kayley, Maddie, and Rachel collected 15 marbles. They want to share the marbles equally. How many marbles will each of the 4 girls get? How many marbles will be left over? Oscar used a model to solve this problem. He says his model represents $4 \overline{)15}$. What is his error?'. Below the text is a visual model with four circles, each containing two marbles, and a group of five marbles. The interface includes navigation buttons (back, forward, home, search), a 'Check Answer' button, and a sidebar of Learning Aids: 'View Example', 'Step by Step', 'Math on the Spot', 'Textbook', 'Print', 'Turn It In', and 'Save and Close'.

} Learning Aids



This block shows four Learning Aids buttons stacked vertically: 'View Example' (with a calculator icon), 'Step by Step' (with a path icon), 'Math on the Spot' (with a video player icon), and 'Textbook' (with an open book icon).

View Example and *Step by Step* will show you how to solve the problem you are working on. If you use those Learning Aids, you must click on the *Try Another* button.

This will give you a similar problem so you can show that you know how to solve it.



The *Math on the Spot* button links to a video. There is one video in each lesson

The *Textbook* button links to the pages from the textbook that the problem is based on.



The *Check Answer* button lets you know if your answer is correct. If your answer is incorrect, click *Try Another*.

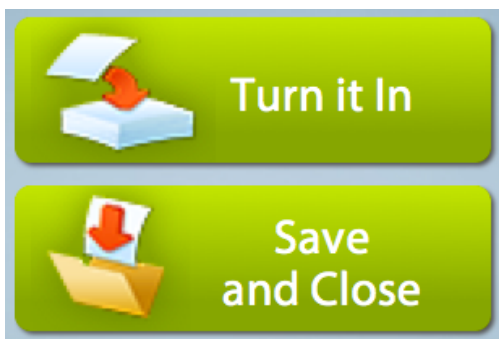
A few questions do not have Learning Aids available.

You will only see Learning Aids when your teacher gives you Homework assignments. You won't see the Learning Aids when your teacher gives you a Test in the Personal Math Trainer.



6 Turn In Your Assignment

After you have answered all the questions, you are ready to turn in your assignment.



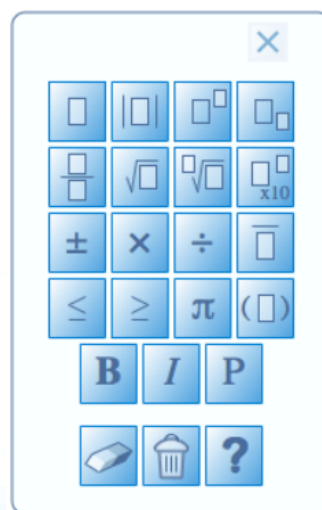
Click the *Turn it In* button when you are ready to submit the assignment to your teacher. Once you click it, you will no longer see the assignment.

You can click *the Save and Close* button as often as you want up until the due date of the assignment. However, your work is not sent to your teacher until you click the *Turn it In* button.

You can see your scores by clicking on *My Scores* from the main page in ThinkCentral.

7 Other Helpful Hints

At Grades 3–6, some questions require you to use an Answer Palette to enter fractions or math symbols. When you are using the Answer Palette, avoid using the backspace or delete key. If you need to erase your work or start over, use the eraser button or the trash can button in the Answer Palette.



Your teacher might use the Personal Math Trainer to give you a Personal Study Plan or Intervention and Enrichment assignments. These assignments will have a purple banner at the top. They contain carefully selected items to help you with your math assignments. These personalized assignments last for a set amount of time. Make sure you're using the Learning Aids to understand each problem and answer them correctly!

